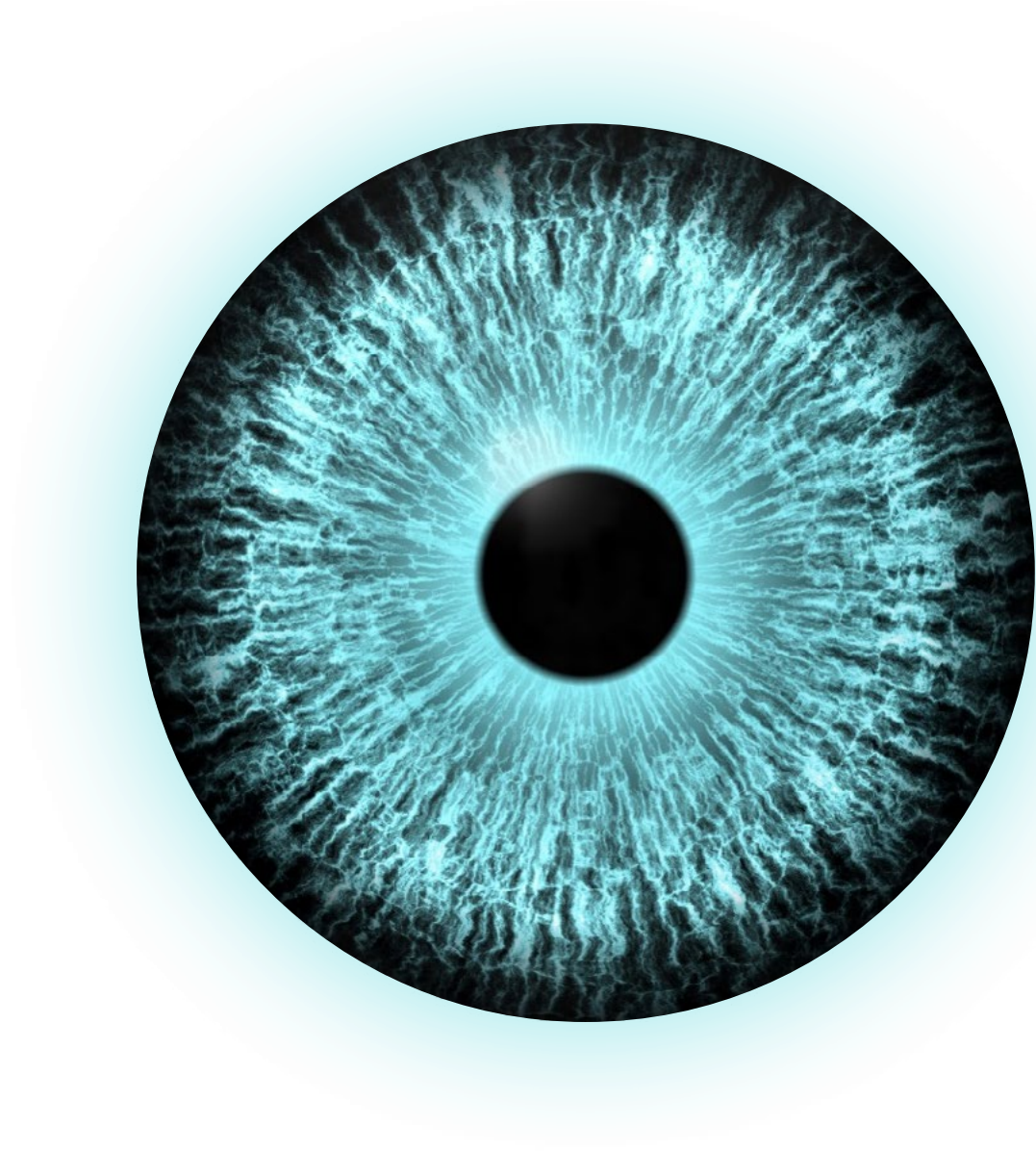




Go further with **Versa HD[®]**

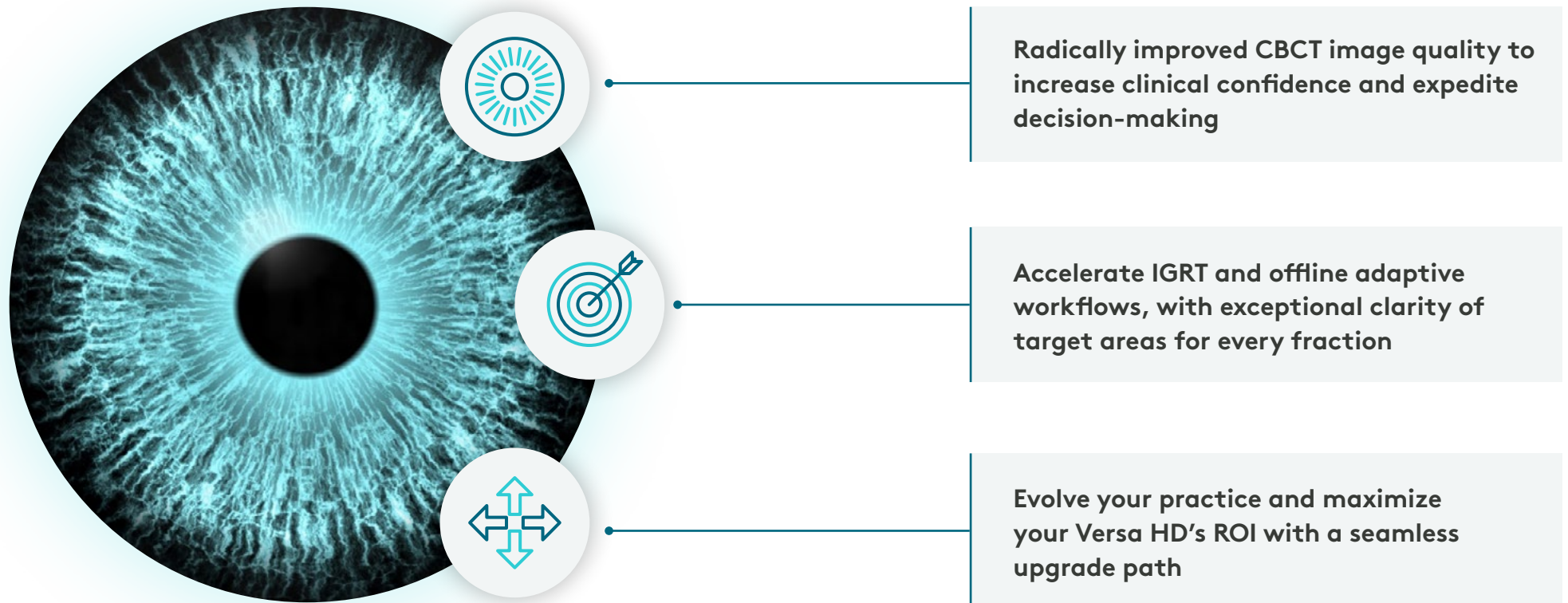
Upgrade your Elekta Versa HD with
Iris[®] high-definition AI-enhanced CBCT
imaging to evolve your practice



Iris[®] is a component of Elekta medical linear accelerators
and has CE mark and U.S. FDA 510(k) clearance.

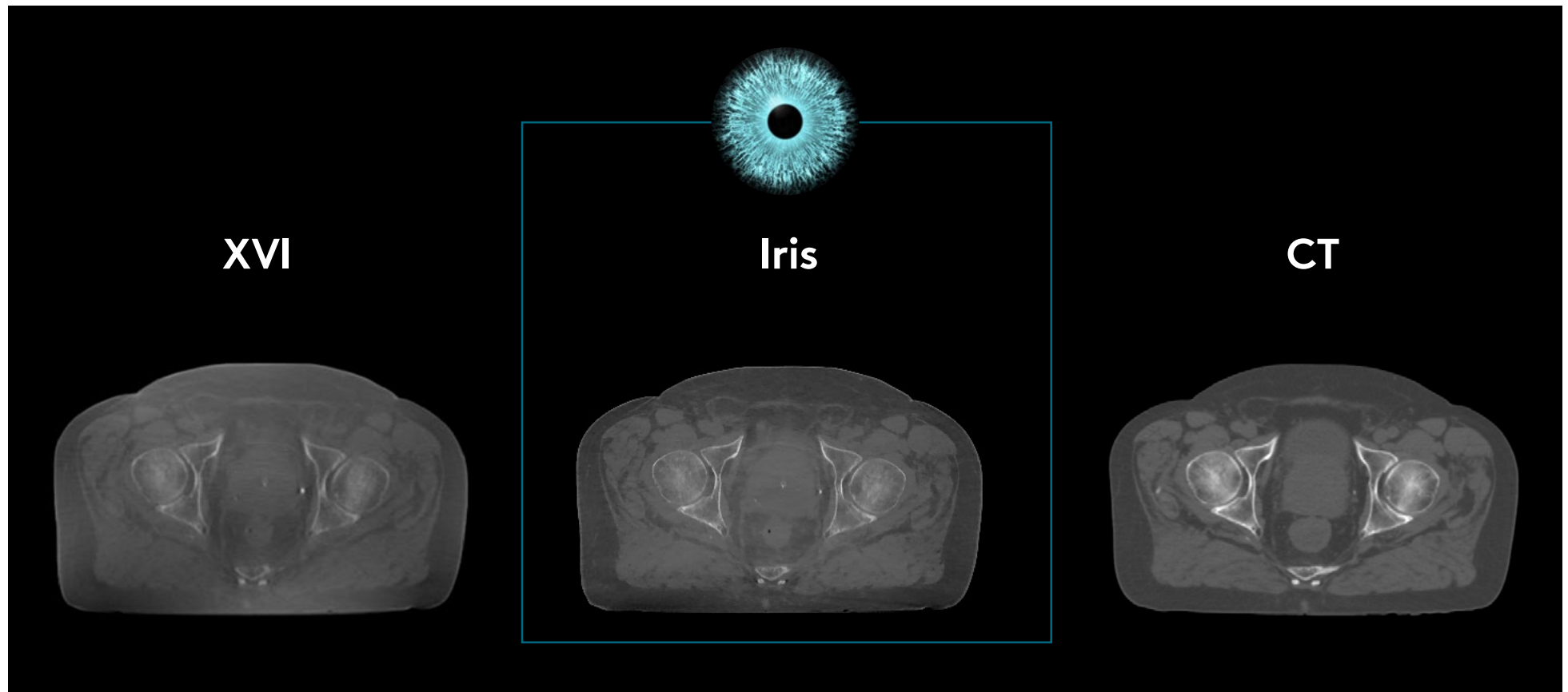
Why **upgrade** your Versa HD?

Bring your trusted Elekta CT-Linac up to date with the latest enhancements



Iris high-definition, AI-enhanced imaging

delivers radically improved contrast for visualization of target boundaries and nearby healthy tissues



Confidence of **clarity**

Iris high-definition AI-enhanced imaging boosts your confidence to deliver each and every radiotherapy dose to your patients with exquisite, pinpoint accuracy.

Iris uses next-generation anatomy-specific AI Scatter Correction and Polyquant CT for radically improved CBCT image quality without additional radiation dose or acquisition time.

Iris high-definition AI-enhanced images have:



Enhanced soft-tissue contrast



Higher spatial resolution



Better uniformity



Reduced artefacts



Improved Hounsfield Unit accuracy

How do you benefit?

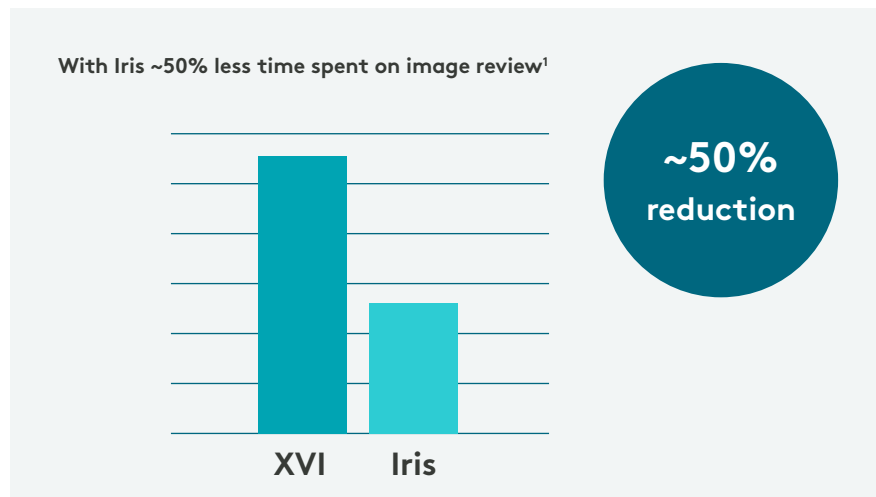
- Refine your IGRT workflows with greater clarity in visualizing targets and organs-at-risk
- Move to more stereotactic treatments with confidence
- Streamline offline adaptive processes with insights to decide on plan adaptation and re-plan without the need for a CT-sim

Accelerate your **workflows**

Experience strikingly better image quality without compromising speed. Better visualization of target areas will support rapid treatment decisions and automation for more efficient workflows.

No compromise on speed

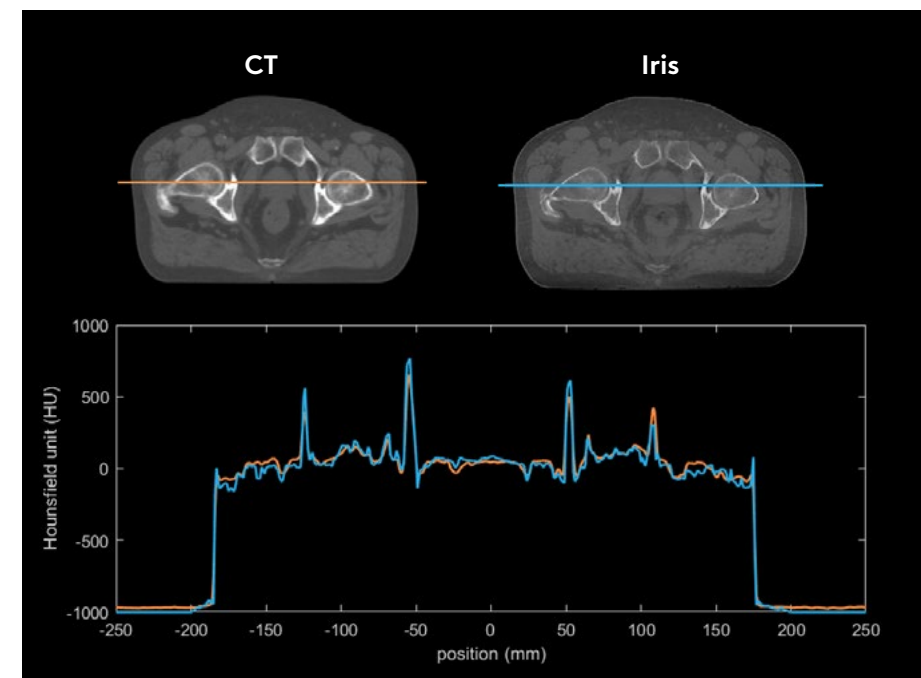
Fast, ten-second iterative image reconstruction using GPU computation offers strikingly better image quality without compromising speed. This advancement accelerates image review, position verification and contouring steps for fast and efficient IGRT workflows.



1. Data on file. ~50% reduction in time from accepting reconstruction to CMA launch

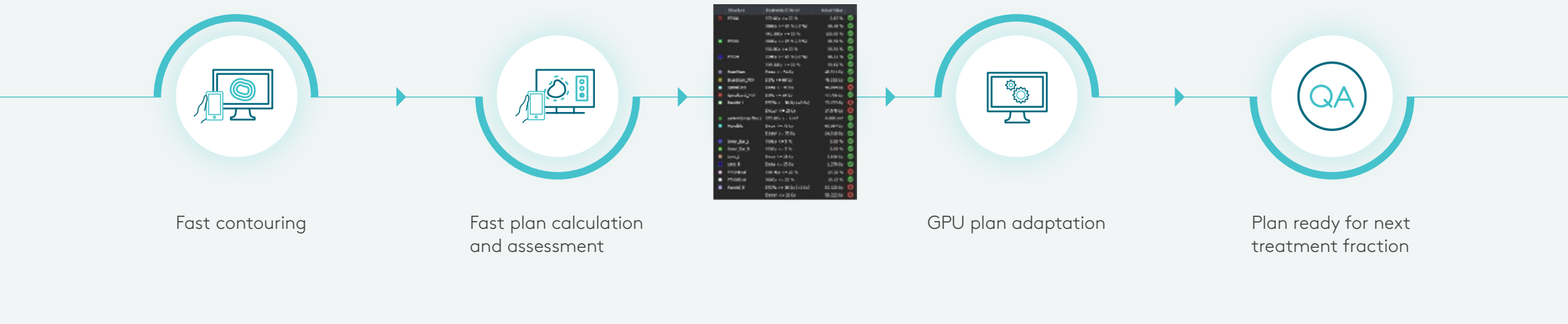
Improved Hounsfield Unit accuracy

Next-generation reconstruction algorithms lead to higher accuracy in attenuation modeling ensuring more precise quantitative imaging results. The unparalleled similarity in image appearance between diagnostic CT and Iris CBCT promotes more efficient manual contouring workflows. Moreover, it is a prerequisite for fast and more reliable AI auto-contouring for adaptive workflows.



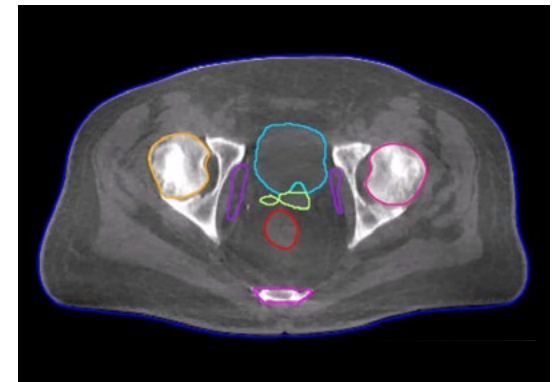
Revolutionary **adaptive workflow**

Enabled by Iris radically improved image quality and Elekta ONE® Planning



Unlock adaptive strategies enabling you to adapt and deliver highly personalized care to your patients with minimal impact to resources

- Enhance flexibility and precision with **decision support**
- Experience seamless efficiency with **analysis of when planning is necessary, without repeat CT-sim**
- Achieve unparalleled speed with **GPU-based dose calculation and optimization**
- **Turn replanning into scheduled task** instead of a scramble



Evolve your practice **today** with a seamless upgrade path

Stay at the forefront

Bring your trusted Elekta CT-Linac up to date with the latest enhancements. With Iris, you can enjoy a leap in image quality, keeping your clinic at the forefront of technology.

Hassle-free implementation

Install Iris rapidly in just one day with minimal disruption, delivering high-definition AI-enhanced imaging without significant downtime. Imaging workflows remain unchanged, providing new capabilities without changing the way you operate.

Maximize financial value

Upgrading to Iris is a cost-effective choice. Gain new clinical capabilities without the high capital expenditure of a new system. With guaranteed future software expansions you can keep your system up to date throughout its lifetime. Additionally, the opportunity to expand your stereotactic programmes will enable shorter treatment courses and increased patient throughput.





Hope for everyone
dealing with cancer.

Elekta AB

Box 7593
SE-103 93
Stockholm, Sweden
T +46 8 587 254 00

Latin America, South America

T +55 11 5054 4550

Asia Pacific

T +65 6221 2322

Turkey, India, Middle East, Africa

T +90 216 4743500

Japan

T +81 3 6722 3808

North America

T +1 770 300 9725

China

T +86 10 5669 2800

For further information please contact your local Elekta office.
Details can be found at [elekta.com/offices](https://www.elekta.com/offices)

 [elekta.com](https://www.elekta.com)  [/elekta](https://www.facebook.com/elekta)

 [@elekta](https://twitter.com/elekta)  [/company/elekta](https://www.linkedin.com/company/elekta)

[elekta.com](https://www.elekta.com)

LPCVHD240903_USOnly © 2025. The Elekta Group. All rights reserved. Iris® is a component of Elekta medical linear accelerators and has CE mark and U.S. FDA 510(k) clearance.

Signature Manifest

Document Number: E080162

Revision: 01

Title: Versa HD upgrade brochure RAMER

Effective Date: 13 Jan 2026

All dates and times are in Netherlands.

Versa HD upgrade brochure RAMER

Document Approval

Name/Signature	Title	Date	Meaning/Reason
Abbey Gregory (AGREE10627)		07 Jan 2026, 10:09:13 AM	Approved
Thomas Valentine (USVALTHO)		07 Jan 2026, 04:17:40 PM	Approved
Chris Gilpin (GBGILCHR1)		08 Jan 2026, 09:32:48 AM	Approved
Angela Trask (ATRAE11414)		09 Jan 2026, 03:06:00 PM	Approved
Marieke Grootel-Rensen (MGROE10315)		13 Jan 2026, 09:33:47 AM	Approved